



WORKING TOGETHER

Expert engineering solutions for the
water treatment industry



Welcome to Titan Mechanical Services

Titan Mechanical Services provides a range of niche engineering services associated with commercial and industrial water systems. Our collection of highly specialised service solutions are uniquely tailored for the water treatment industry, combining a complex range of capabilities into a single delivery model.

From our base near Liverpool, we operate across the UK with an extensive operational model led by our hugely experienced management team and delivered by our highly skilled mobile engineers. Our customers are a diverse range of blue chip end-users, operating in a variety of sectors, including; Healthcare, Industrial, Nuclear, Commercial Property, Government, MOD, Hotel & Leisure, Student Accommodation, Residential Care, Retail, Education & Prisons.



Services



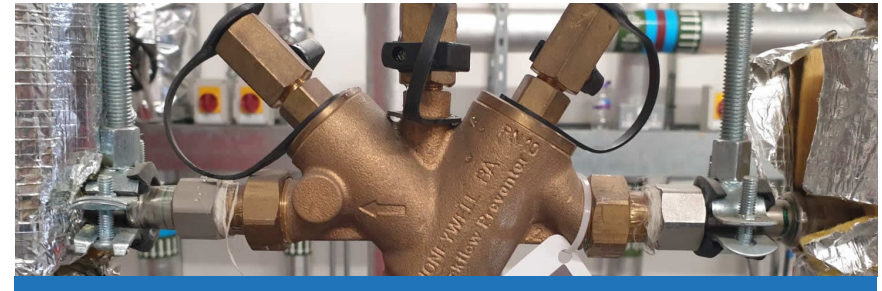
Legionella Remedial Works

The UK's premier service provider for Legionella remedial works, offering a comprehensive range of services associated with reducing the risk from Legionella and other waterborne bacteria.



Cold Water Storage Tanks

We have extensive expertise in the repair, refurbishment and installation of cold water tanks, delivering turnkey projects on a wide range of systems.



Backflow Prevention

We specialise in the supply, installation and testing of a wide range of back flow prevention devices, including RPZ valves and Cat-5 break tanks.



Hot Water Systems

We supply and install a range of hot water storage systems, undertake repairs to expansion vessels, and carry out endoscopic inspections of calorifiers.

Legionella Remedial Works

Specialist mechanical services associated with reducing the risk from Legionella and other waterborne bacteria.

We offer a full range of services tailor made to meet the diverse needs of our clients. From specifying a project through to delivery, our dedicated project management teams have years of experience in managing remedial works projects. Our teams specialise in the following areas:

- Removal of dead-leg pipework
- Replacement of non-WRAS approved flexi-hoses
- Installation or replacement of system valves
- Servicing and replacement of TMV's
- Cleaning and disinfection of hot & cold systems
- Descaling and disinfection of showers and spray taps
- Insulation of pipework
- System investigations following positive Legionella results



Backflow Prevention

Expert protection of potable water supplies from backflow contamination.

Our team specialise in the supply, installation and maintenance of a wide variety of systems designed to protect mains supplies from backflow contamination. We deliver all core services using our highly trained technicians, operating to the highest standards of technical excellence and health & safety. We specialise in the following areas:

- Testing and replacement of RPZ valves
- Installation of double check valves
- Supply and installation of Cat-5 tanks
- Pipework modifications
- Engineering design services
- System investigations & consultation

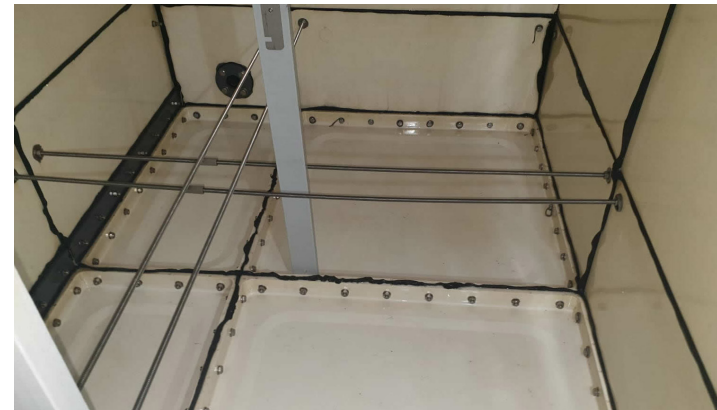
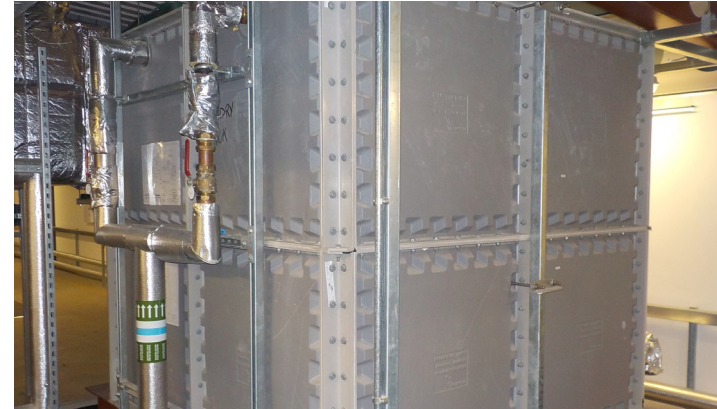


Cold Water Storage Tanks

Delivering a comprehensive range of turnkey services for your critical assets.

Our team are the UK's leading specialist in the design, installation, refurbishment and repair of cold-water storage tanks. Working across a wide range of industries, our highly trained engineers offer a comprehensive package of services that includes:

- Tank replacement
- Tank relining and refurbishment
- Replacement ball valves & pipework modifications
- Removal of hollow supports
- Installation of low level access hatches
- Temporary tanks
- Leak detection and repairs
- Mains bypass



Hot Water Systems

Expert care for your hot water systems.

Our experienced team of engineers specialise in refurbishing and upgrading a wide range of hot water systems. Whether it be maintenance and repairs, or full asset replacement, we can deliver tailor-made solutions to suit the needs of any system. Our team have extensive experience in the following areas:

- Installation of plate heat exchangers, calorifiers and water heaters
- Mains conversions
- Installation and modification of expansion vessels
- Endoscopic inspections
- Acid descaling
- Insulation of vessels and pipework
- System balancing
- Engineering design services





Contact us today on:

01704 335800

enquiries@titanmechanical.co.uk

Unit 102 Merlin Park
Ringtail Road
Burscough
Lancashire
L40 8JY



**We operate
throughout
the UK**